

Catholic Charities of Los Angeles

San Fernando Pastoral Region



San Fernando Region

WHERE WE ARE

CCLA San Fernando Region

Site Offices

Guadalupe Community Center / San Fernando Region Main Office

21600 Hart Street
Canoga Park, CA 91303
213-251-3549

Burbank Temporary Skilled Worker Program

1190 Flower Street
Burbank, CA 91502
818-566-7148

Glendale Community Center

4322 San Fernando Road
Glendale, CA 91204
213-251-5707

Van Nuys Loaves & Fishes II

7309 Van Nuys
Van Nuys, CA 91405
818-997-0943

WHO WE SERVE



- Men, woman , and children.
- Services are provided regardless of race, ethnicity, nationality, gender, age or religious beliefs.



- The region faces a dramatic increase in needs. In recent years the population growth has included an influx of many low income families and new immigrants.

- 15% of population in San Fernando Region are with household income less than 100% below the Federal Poverty Level.



- In San Fernando Region, 30% of families and individuals have food insecurity.

- In 2018 the unemployment rate in Los Angeles County increased to 7.6%, now more people turning to Catholic Charities to obtain food and clothing. Over 90 % of the families served by catholic charities of Los Angeles have income of less than \$ 15,000 per year.



Men & Women - Children - Seniors - Families - All People In Need

REGIONAL SERVICES

- Food Pantries
- Case Management
- Clothing & Thrift Store
- Summer Camp
- Rental & Utility Assistance
- Pre-School
- Sports for Kids
- Art & Music Activates for youth
- Senior In-home Services
- Neighborhood Learning Center
- Nutrition and Food Preparation
- Exercise and Nutrition for kids and Moms
- Homeless Service
- Employment Training for Refugees and Immigrants Citizenship
- English as a Second Language classes
- Temporary Skilled Worker Center



Thrift Stores & Clothing allocation Centers



Refugees & Immigration Services



Tutoring Center



Food Pantries

GUADALUPE COMMUNITY CENTER

The Guadalupe Community Center has been serving the community since 1950, helping to meet the ever growing needs of the men, women and children that come to the Center.

The Center provides the following services:

- **Food Pantry**
The pantry offers food and nourishment to families and individuals five days a week.
- **Summer Camp for Children**
An eight week camp that provides recreational and educational activities during the summer break for kids (age 7-12) from low income families.
- **Tutoring and Learning Center**
Offers free one-on-one and specialized tutoring to elementary school age kids whose families can not afford tutoring fees.
- **Sports, Recreational, cultural and art activities, and holiday events**
The Center offers seasonal sports, recreational, cultural and art activities, as well as multiple holiday events for the families throughout the year.
- **Thrift Store**
The store offers clothing and household items for the most reasonable prices as well as free items to those that cannot afford them.
- **Senior Citizen Program (OASIS)**
Safety net services for Seniors 65 years and old. The goal of the of the program is to help seniors to remain independent as long as possible.
- **English as a Second Language (ESL) classes**
ESL classes are offered 5 days a week at no cost to the community. Students learn speaking, listening, reading, and writing skills.
- **Case management**
The Center offers case management, job training and social services for community members, refugees & immigrants.
- **Pre-school:**
In collaboration with the California's Children Academy, the Center offers pre-school services to low-income children age 2-5.
- **Refugee Services:**
The Guadalupe Center offers a full range of resettlement and family reunification services for refugees. Case management services include airport reception, orientation, financial assistance, assessments, referrals, home visits, tutoring, employment preparation and placement.

GUADALUPE COMMUNITY CENTER



GLENDALE COMMUNITY CENTER

The Center has served Glendale residents for nearly 30 years. The Program provides social services to low-income families and individuals.

The Center provides the following services:

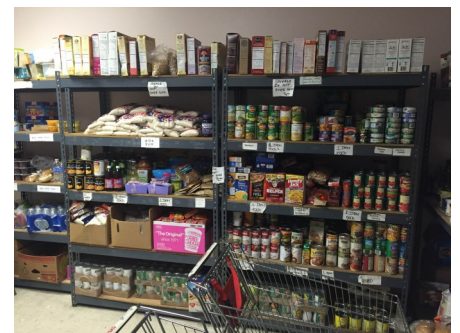
- **Food Pantry**
Provides food and nourishment to families and individuals four days a week.
- **Thrift Store/Clothing Center**
The store offers clothing and household items for the most reasonable prices as well as free items to those that cannot afford them
- **Case management**
We provide case management, job training and social services for community members, refugees and immigrants.
- **Utility and rental assistance**
In collaboration with the City of Glendale authorities, we are offering utilities and rental assistance to the families in need.
- **Refugee, Immigration and Citizenship Services**
Provides a full range of resettlement and family reunification services for refugees. Case management services include airport reception, orientation, financial assistance, assessments, referrals, home visits, tutoring, employment preparation and placement.



Case Management



Thrift Store and clothing allocation center



Food Pantry

Van Nuys Loaves & Fishes II

Van Nuys Loaves & Fishes II is a community services Center that provides safety-net services to the local community.

The following are the services provided by the Center:

- **Food Pantry**
Provides food and nourishment to families and individuals three days a week.
- **Clothing Distribution**
The Van Nuys Center, offers clothing and household items to families and individuals who would otherwise go without.
- **Case management**
The Center offers case management and social services for community members.



Clothing Distribution Center



Food Pantry

Burbank Temporary Skilled Worker Center

The Temporary Skilled Worker Center (Day Labor Center) is operated by Catholic Charities of Los Angeles, Inc.—San Fernando Region. It offers day laborers and the local community with a practical, structured and orderly system to help find work. Day laborers must register with the Center and abide by its rules and regulations. They must arrive by 5:30 AM each day and work is distributed through a lottery system.

The Center is not an employment agency. Rather, it assists day laborers in matching their particular skills such as construction, plumbing, or painting, with employers' job needs. The Center also provides laborers and employers with a process to resolve disputes over pay or performance.



Open 7 days a week (5:30 am to 1:00 pm)



Temporary Skilled Worker Center

EFFICIENT USE OF RESOURCES

Catholic Charities of Los Angeles Uses Every Resource Wisely

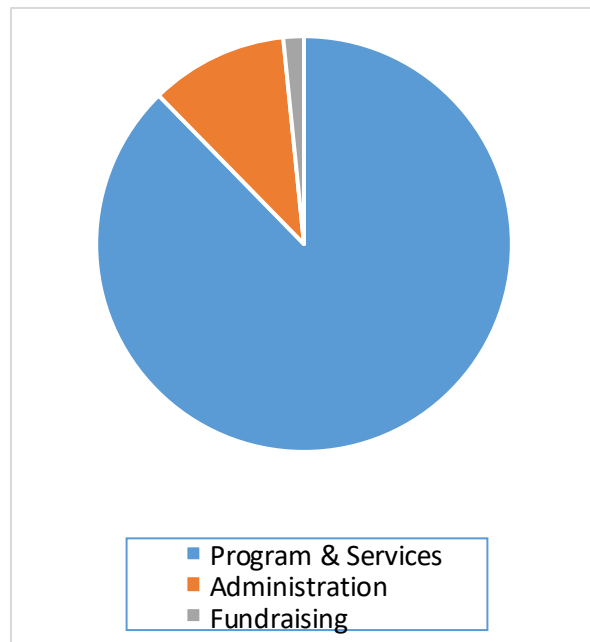
- Most Resources Expended on programs and services
- Low Administration Costs
- Very Strong Base of Volunteers
- Key Partnerships
- Donations of Clothing and Food

Organizational Expenditures *

87.5 % - Programs & Service

10.7 % - Administration

1.6 % - Fundraising Expenses



Catholic Charities of Los Angeles is one of the largest human services providers in California and accredited by the Council of Accreditation for Children and Family Services.



* These percentages are for the entire Los Angeles Region.

Providing Help & Creating Hope